

# SANTA BARBARA KING HARBOR

47th ANNUAL RACE



**SB2|KH**

JULY 26th - 27th 2019

# *The Chandlery*

Est. 1946  
**YACHT SALES**  
**Santa Barbara Harbor**

MAKING DREAMS COME TRUE SINCE 1946



**805-965-4538**  
[www.Chandlery.com](http://www.Chandlery.com)



Welcome to Santa Barbara for the 47<sup>th</sup> annual Santa Barbara to King Harbor race!

The officers, directors, members and staff of Santa Barbara Yacht Club wish you all an enjoyable, safe and memorable experience. Excitement and anticipation of the major offshore race will build in Santa Barbara Harbor until the race start, midday on Friday, July 26, 2019.

Race chairs this year are David Sadecki from Santa Barbara Yacht Club and Deborah Helling from King Harbor Yacht Club. Together they have worked hard preparing for this year's race. Each of the chairs has many volunteers contributing to provide a great experience for the participants. SBYC handles the pre-race prep, entries, merchandise sales, program development, Thursday BBQ beach party, and race start. KHYC handles the finish, welcome party, shrimp dinner, trophies, and awards ceremony. Both clubs manage docking accommodations before and after the race. Please join me in thanking our many volunteers for their hard work.

I would also like to thank the Santa Barbara Waterfront Department, Mick Kronman and Jeanette Prusinski, for accommodating the race boats with dock assignments. As always, the professional staffs of the Santa Barbara Yacht Club and King Harbor Yacht Club deserve our appreciation for their hard work in making this a successful event.

I would like to acknowledge our generous race sponsors this year from Ullman Sails, Harbor Marine Works, Chandlery Yacht Sales, Seacoast Yacht Sales, and Vaughn Allen Yachts. Their support helps make this event possible.

To the skippers and crews of this year's race, we extend a warm welcome to Santa Barbara Yacht Club. We will make every effort to ensure that your visit is pleasurable - from the BBQ and live music on Thursday evening to the Friday morning breakfast and coffee.

Have a **SAFE**, fun and speedy race!

Scott Deardorff

2019 Commodore  
Santa Barbara Yacht Club



# City of Santa Barbara

Waterfront Department

[SantaBarbaraCA.gov](http://SantaBarbaraCA.gov)

June 11, 2019

## Administration

Tel: (805) 564-5531

Fax: (805) 560-7580

## Parking

Tel: (805) 897-1965

Fax: (805) 560-7580

## Stearns Wharf

Tel: (805) 564-5518

Fax: (805) 963-1970

## Harbor Patrol

Tel: (805) 564-5530

Fax: (805) 897-2588

## Harbor Maintenance

Tel: (805) 564-5522

Fax: (805) 966-1431

132-A Harbor Way

Santa Barbara, CA

93109

Dear King Harbor Racers:

Welcome to Santa Barbara Harbor! While many of you have been here before, for some this may be your first visit. To accommodate you, we have enclosed a map of the Waterfront, including places to provision your boat, grab a meal or buy a trinket to remember us by. In addition, we appreciate your attention to the following details during your visit to our harbor:

1. Santa Barbara Harbor's Clean Marina Program includes a required dye-tabling of your Marine Sanitation Device (MSD) upon arrival. Please check in at the Accommodation Dock for a quick MSD check before receiving your slip assignment from the race committee (or from Harbor Patrol if you are an early arrival) and before going to your assigned slip.
2. Remember, free sewage pump-outs (Marina One and Fuel Dock) and a bilge-water pump-out (Fuel Dock) are available for your use.
3. Harbor Patrol is located above West Marine. Look for the American flag.
4. If you want a keycard for access to marina facilities, you may purchase one at the Harbormaster's Office.
5. Slip rates for vessels under 70' are \$1.00 per foot per night; 70'-plus are \$1.50 per foot per night.
6. Alcohol use is confined to the marinas and is not allowed in public areas outside marina gates.
7. Please don't lay shore-power cords across marina walkways—on the dock or overhead. Boats rafted together or assigned to walkways will not have shore-power access.
8. Questions? Call Harbor Patrol at (805) 564-5530, or hail them on Channel 16 VHF, then switch to Channel 12.
9. If you experience facilities problems at your berth, call Maintenance staff at (805) 897-1974, or visit the Harbor Patrol Office in person.

Thanks again for visiting our beautiful harbor. I wish you all a safe, speedy and enjoyable trip to King Harbor.

Sincerely,

Mick Kronman

Harbor Operations Manager

---

# 2019 Santa Barbara to King Harbor Race

## Schedule of Events

### **Tuesday, July 23<sup>th</sup> - SBYC**

1000-1600	SBYC Race Office Open (805) 965-8112
-----------	--------------------------------------

### **Wednesday, July 24<sup>th</sup> - SBYC**

0900-2200	Santa Barbara Yacht Club Open
1000-1600	SBYC Race Office Open (805) 965-8112
1130-1400	Lunch Menu served
1650	First Start for SBYC Wet Wednesdays
1800	SBYC Wet Wednesday BBQ and Party

*\*The SBYC Bar is always open once food is being served until the club is closed*

### **Thursday, July 25<sup>th</sup> - SBYC**

0900-2330	Santa Barbara Yacht Club Open
1300-1900	Registration Desk Open
1130-1430	Lunch Menu served
1700	SBYC Beach Party with live music
1800-2130	Santa Maria style BBQ

### **Friday, July 26<sup>th</sup> – SBYC / KHYC**

0700-2200	Santa Barbara Yacht Club Open
0730-1000	Breakfast buffet (\$15 all inclusive)
0800-1000	Registration Desk Open
0900	Skipper's Meeting at SBYC
1155	First Warning Signal

*- King Harbor Yacht Club Open all day –*

Upon Arrival	Complementary snacks
Until 2am	KHYC Bar Open

### **Saturday, July 27<sup>th</sup> - KHYC**

0700	King Harbor Yacht Club Open
0700-1000	Bloody Mary Bar
0800-1400	KHYC Breakfast & Lunch Served
1400	Merchandise Sales
1500	Awards Party – appetizers and music
1600	Awards presentation
1730	Shrimp Feed first seating
1900	Shrimp Feed Second Seating



# 2019 Santa Barbara to King Harbor Race

*Santa Barbara Leg*

*July 26-27, 2019*

## Santa Barbara Facility Information

*\*All facilities are also shown on 'Attachment H – Santa Barbara Harbor Map'*

### **BOAT DELIVERY AND ARRIVAL**

Santa Barbara slip reservation may be done through the online entry process available online at <https://sbyc.org/2018-sb-kh/>. Dockage will be available for pre-registered boats at the fee of \$1.00 per foot per night. The boat arrival date and accurately calculated fees must be included with each entry. Unpaid entries will not receive dock space.

Santa Barbara - Upon arrival by sea to the Santa Barbara Harbor, each boat is asked to call the Santa Barbara Harbor Department on VHF Channel 12. The Harbor Department will ask boats to proceed to the Accommodation Dock at the west end of the harbor directly in front of the Harbor Department to receive a dye tab in their tank. Competitors may then radio the Santa Barbara docking committee on VHF Channel 78 to receive their slip assignment. In some circumstances due to the size of a boat, the harbor department may ask the vessel to go directly to their assigned slip over the radio. As a policy, the Harbor Department and docking committee do not release slip assignments in advance.

King Harbor - Upon finishing in Redondo Beach, yachts requiring guest moorage will be met by KHYC docking committee boats to be escorted to a mooring location. The docking committee will monitor Channel 78. Boats should be equipped and prepared to anchor if necessary.

### **MARINA GATE ENTRY**

The Marina One entrance is located just a short jaunt down from SBYC as shown in 'Attachment H – Santa Barbara Harbor Map'. Marina gate cards can be purchased for \$7 each from the harbor department (located next to SBYC). The Marina One gate will be unlocked from noon on Thursday until noon on Friday.

### **YACHT CLUB FACILITIES**

The yacht club facilities will be open to all competitors as stated on the 'Santa Barbara Schedule of Events.' The yacht club accepts credit card charges only for visitors with the exception of the Wet Wednesday Regatta where cash will also be accepted to buy drink tickets and meal tickets.

### **RESTROOMS / SHOWERS**

The Marina restrooms are accessible with a marina gate card. The yacht club restrooms are available during regular operating hours or with a SBYC parking lot gate card after hours. Public restrooms are also available adjacent to the harbor public parking lot. Most restroom facilities have showers.

### **ICE & SUPPLIES**

There is a Harbor Market located adjacent to SBYC with ice available for purchase. There is also limited ice at SBYC on the west deck downstairs. Key is available at the front desk.

**Visiting Boater's Map to Santa Barbara Harbor**

The map illustrates the harbor area, including the Federal Channel, West Beach, and various docks. Key locations are marked with icons and labels:

- Harbor Marine Works (boat repairs & launching)
- Short term storage for hoist launching boats
- SBYC Hoist
- SBYC End Tie D
- Pay parking at Harbor Lot
- Long Term Trailer Storage
- Free vehicle parking at Pershing Park
- Long Term Trailer Storage

The map also shows the Pacific Ocean, Stearns Wharf, and the Pacific Ocean. A compass rose is located in the bottom left corner.

## Visiting Boater's Map to Santa Barbara Harbor

- |   |                      |   |               |   |               |   |                   |   |                   |
|---|----------------------|---|---------------|---|---------------|---|-------------------|---|-------------------|
| ★ | Harbormaster         | 🏠 | Marina Area   | 🚢 | Fish Station  | 🚢 | Yacht Club        | 🚲 | Bike Path         |
| 🅑 | Parking              | 🚻 | ADA Restrooms | 🚻 | Porta Potty   | 🚻 | Mini-mart         | 🚌 | Bus Shuttle Stop  |
| 🅑 | Valet Parking        | 📞 | Telephone     | 🚻 | Pumpout       | 🚻 | Battery Disposal  | 🚌 | Bus Shuttle Route |
| 🏧 | ATM Automatic Teller | 🚚 | Loading Ramp  | 🚻 | Blige Station | 🚻 | Waste Oil Station | 🚻 | Public Pool       |



# 2019 Santa Barbara to King Harbor Race

July 26<sup>th</sup>-27<sup>th</sup>, 2019

## SAILING INSTRUCTIONS



The Organizing Authorities for the 2019 Santa Barbara to King Harbor Race will be:  
The Santa Barbara Yacht Club (SBYC), 130 Harbor Way, Santa Barbara, CA 93109 &  
The King Harbor Yacht Club (KHYC), 280 Yacht Club Way, Redondo Beach, CA 90277

### I. GENERAL

- I.1 Santa Barbara Yacht Club and King Harbor Yacht Club invite skippers of eligible boats to enter under the conditions of the Notice of Race (NOR).
- I.2 PHRF of Southern California (PHRF) is the Rating Authority (RA) for mono-hulls.
- I.3 Ocean Racing Catamaran Association (ORCA) is the Rating Authority (RA) for multihulls.
- I.4 The term Skipper as used herein is defined as the person who is designated on the entry form, and for the purpose of RRS 46, is the person in charge as it relates to the Racing Rules of Sailing (RRS) or any matters related to the 2018 Santa Barbara to King Harbor Race. The Skipper is responsible for compliance with the rules, the boat, its handling, safety, the conduct of its crew before, during, and after the race.

### 2. RULES

- 2.1 The race will be governed by the rules as defined in The Racing Rules of Sailing (RRS).
- 2.2 Membership with a valid rating certificate is required for the appropriate class association. Valid and current Southern Californian PHRF certificate in the online PHRF database ([www.phrfsocal.org](http://www.phrfsocal.org)) shall constitute proof of membership for each entrant (except as noted in Sailing Instruction 2.3). Inclusion on the current ORCA rating list shall constitute proof of ORCA membership.
- 2.3 Boats competing in a properly entered One-Design class (including those competing under an alternative rating rule) need not provide PHRF rating certificates. However, boats without certificates will not be eligible for the overall competition. This changed the Notice of Race.
- 2.4 Cruising Class boats may apply a Non-spinnaker offset to their rating if they will not use free-flying headsails.
- 2.5 Cruising Class boats may use their motors within the rules set forth in "Attachment B - Cruising Class Motoring Rules and Log".
- 2.6 Rule 51, Movable Ballast is changed to allow the movement of sails that are not set.
- 2.7 Rule 51, Movable Ballast, and Rule 52 Manual Power are changed to allow the positioning of movable ballast by power on boats as designed and as rated by the RA. All movable ballast systems shall be capable of manual operation if powered systems are inoperable.
- 2.8 The U.S. Sailing prescriptions to rules 63.2 will not apply.
- 2.9 In the case of a conflict, these Sailing Instructions will take precedence over the Notice of Race.

### 3. SAFETY REQUIREMENTS

- 3.1 Compliance with the current United States Coast Guard Regulations and the offshore safety regulations of the fleet in which they are competing is required.
- 3.2 Boats shall comply with the US Safety Equipment Requirements, (USSER) except as modified by the notice of race and the sailing instructions. The course is classified as a Coastal Race. The equipment requirements are available at: [https://www.ussailing.org/wp-content/uploads/2018/03/US\\_SER\\_2018.0\\_Categories.pdf](https://www.ussailing.org/wp-content/uploads/2018/03/US_SER_2018.0_Categories.pdf). The US Safety Equipment Requirements (USSER) are changed for the following sections:



- 
- 3.2.1 Add to USSER 2.4.1: Boats not designed for persons on the foredeck (example: Melges 24) shall be exempted from bow pulpit requirement. .
  - 3.2.2 USSER 2.4.4 is amended to add the sentence: For the 2019 race, lifelines may be the same as those supplied as original equipment.
  - 3.2.3 Add to USSER 2.4.8: Boats originally manufactured without toe rails shall have crew secured to jack lines when on the foredeck.
  - 3.2.4 USSER 2.5.1, 3.8.1, and 3.33.1 are recommendations for the 2019 race.
  - 3.2.5 USSER 3.8.2 is changed to omit the final sentence requiring DSC/GPS capability. It is a recommendation for the 2019 race.
  - 3.2.6 USSER 3.1.2 requirement for crotch or leg straps to be attached to Personal Flotation Devices will be waived for the 2019 race.
  - 3.2.7 USSER 4.3.2. requirement of: At least 30% of those aboard the boat, but not fewer than two members of the crew, unless racing single-handed, including the person in charge, shall have attended a one-day or two-day US Sailing Safety at Sea Seminar within the last 5 years, including online courses when available, or other courses as accepted by US Sailing or other national authority, is waived for the 2019 Santa Barbara to King Harbor Race. The Organizing Authority strongly recommends that person(s) in charge and others take the opportunity to attend upcoming seminar(s), including, when available, the 'On-Line' version.
  - 3.3 Rules Part 2, "When Boats Meet" is replaced between the hours of local sunset and local sunrise by Part B—Steering and Sailing Rules, of the International Regulations for Preventing Collisions at Sea (IRPCAS). Competitors are also reminded that under the preamble of Part 2 of the Racing Rules of Sailing, boats racing must comply with the International Regulations for Preventing Collisions at Sea (IRPCAS) when they meet other marine traffic.
  - 3.4 An operating VHF radio with at least channels 12, 16, 22, 68, 71 and 78 is required.
  - 3.5 The minimum crew regulations are as stated in the bylaws for the appropriate class.
  - 3.6 All boats are required to fly a radar reflector at spreader height or higher for the duration of the race.
  - 3.7 All boats must monitor VHF Channel 16 after their start for the duration of the race. Competitors must obey directions given to them by any naval vessels on VHF Channel 16. No competitor may protest a boat for infringing this Rule. This modifies RRS 60.1.

#### **4. NOTICES TO COMPETITORS**

Notices to Competitors will be posted on the official notice boards located on the lower decks of Santa Barbara Yacht Club and King Harbor Yacht Club.

#### **5. CHANGES TO SAILING INSTRUCTIONS**

Changes to the Sailing Instructions will be posted before 0900 hours, July 26, 2019. The Race Committee will display the numeral pennant of the most recent change under code flag 'Lima' from the SBYC flagpole.

#### **6. SIGNALS MADE ASHORE**

Signals made ashore will be displayed on the SBYC flagpole.

#### **7. RACE BURGEE**

The Race Burgee shall be displayed from the starboard main shroud or halyard at spreader height for the duration of the race. This changes RRS 56.

---

## **8. CHECK-IN**

Prior to the first warning signal, all racing boats must identify themselves to the check-in vessel on station near the entrance to the Santa Barbara Harbor by clearly displaying their sail number and the number of people on board on their packet envelope. Each boat is responsible for insuring that the check-in vessel verbally acknowledges her proper sail number and the number of people on board.

For boats too large to come within range of the check-in vessel, they may radio the check-in vessel on VHF channel 78.

## **9. CLASS DIVISIONS AND FLAGS**

Class breaks, starting assignments, and class flags will be as described in "Attachment A – Start Schedule" and will be posted on the event website as well as the Notice Board.

## **10. SCHEDULE OF RACES**

10.1 "Attachment A - Start Schedule" displays the starting schedule for the race and the order of starts. This attachment will be included in each boat's race packet.

10.2 A competitor briefing will be held on the beach adjacent to SBYC at 900 on Friday, July 26.

10.3 The scheduled time of the warning signal for the first start is 1155.

## **11. THE COURSE**

Start (as detailed in Sailing Instruction 12.4)

Anacapa Island to port

Redondo King Harbor Bell buoy (RW "RB" Mo (A) BELL) to port

Finish, inside breakwater (see the attached King Harbor chartlet).

The approximate course to the first mark is 150 degrees.

## **12. THE START**

12.1 Races will be started by using rule 26 with the warning signal made five (5) minutes before the starting signal.

12.2 Starting times are listed in "Attachment A - Start Schedule". The start signal of one class will be the warning signal for the next in each sequence.

12.3 There will be two separate lines defined by inflatable tetrahedrons at each end. Colors for each line will be described in "Attachment A - Start Schedule". In each case, the mark nearest the Race Committee Vessel will be separated from that vessel by approximately 50 feet. The area between the inboard marks, including the Race Committee Vessel, shall rank as an OBSTRUCTION. Vessels entering this area may be subject to disqualification by the Race Committee. Only the Race Committee may protest a boat for infringing this Rule. This modifies RRS 60.

12.4 The Starting Lines will be approximately a half of a mile south of Red Bell Buoy #A ("RW SB Mo (A) Bell") between the designated inflatable racing buoys. Two classes will start simultaneously. The designated line and starting time for each class appears in the "Attachment A - Start Schedule" Sheet.

12.5 Boats shall keep at least 50 yards clear of the starting area until after the starting signal of the class preceding her own. Only the Race Committee may protest yachts for failing to stay clear. This modifies RRS 60.

## **13. ON COURSE SIDE**

13.1 As a courtesy, the Race Committee will attempt to notify recalled boats by hailing their sail number over VHF channel 71. Failure of a boat to see or hear her recall notification shall not be grounds for redress. A boat's position in the sequence of hailed numbers or broadcast numbers shall not be grounds for redress.

- 
- 13.2 A boat starting prematurely between her preparatory signal and her starting signal, which fails to return and restart, will be penalized by the addition of 30 minutes to her elapsed time. (This modifies RRS 29.1) A boat starting prior to her class preparatory signal that does not return to restart correctly will be scored a DNS (Did Not Start).

#### **14. GENERAL RECALL**

Classes recalled in a General Recall will start at the next starting interval after the last scheduled (or previously recalled) class on the originally assigned line. (This modifies RRS 29.2).

#### **15. RADIO COMMUNICATION**

The Race Committee start boat will make broadcasts on Channel 71 that will contain information on class starts, time countdown, on course side boats, and announcements dictated by special circumstances regarding the race. Channel 71 should not be used for hailing by race participants between 1130 and 1230 hours during starting procedures. Failure of any radio announcement shall not constitute grounds for redress.

It is anticipated that Channel 71 will be the Race working channel between Santa Barbara and King Harbor. Emergencies would require use of Channel 16.

#### **16. ASSISTING BOATS IN DISTRESS**

The Race Committee will consider an appropriate time allowance for time lost while aiding a vessel in distress only if redress is requested as described in Rule 62.

#### **17. RACE DISTANCE**

The rated Handicap Distance is 81 Nautical Miles.

#### **18. THE FINISH**

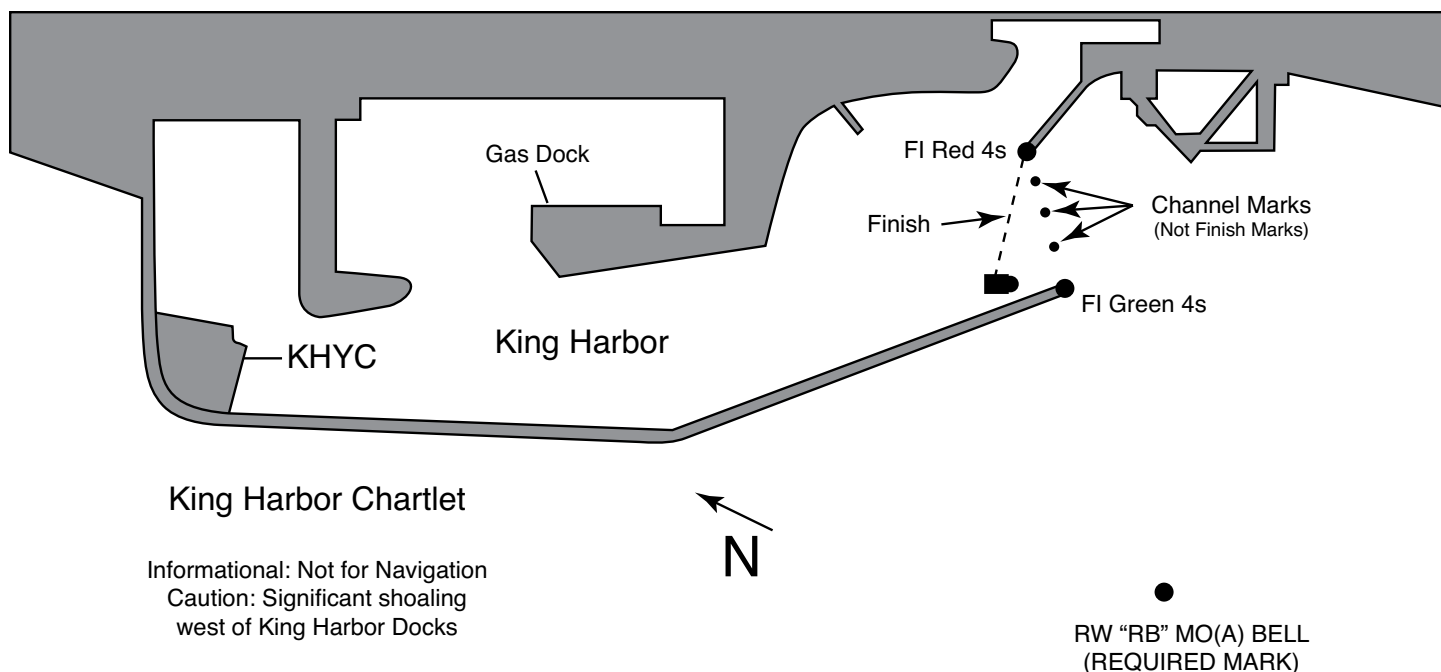
- 18.1 The finish line is between an orange flag on the Race Committee vessel moored just inside the King Harbor breakwater and the flashing red harbor entrance light (FL R 4 sec) on the south jetty, (see the attached King Harbor chartlet).

- 18.2 Each boat shall hail the Race Committee and display her packet number as she crosses the finish line. Sailors are advised that if you cross the finish near the leeward end of the finish line, your sail number may not be visible. After receiving a finish horn, you are advised to sail close to the Race Committee boat to ensure that your sail number has been identified. The responsibility rests with each boat to insure that the Race Committee has made positive identification. Failure to establish identity may result in a score of DNF (Did Not Finish). Finishing yachts requesting dockage shall have on deck ready for deploying, an anchor and sufficient ground tackle. Failure to comply could result in being denied docking privileges.

**CAUTION:** 1) There have been past circumstances where vessels after finishing have remained in the finishing area resulting in “close calls”. Caution is advised. 2) Boats will be met and directed to their moorings by KHYC escort vessels. Please follow the directions of these vessels and do not proceed until told to do so.

#### **19. ABSENCE OF RACE COMMITTEE**

The United States Sailing Association prescribes that in the absence of the Race Committee; a boat shall take her own time when she finishes and report the time taken to the Race Committee as soon as possible. If there is not an established finish line, the finish line shall be a line extending approximately 100 yards on a 245-degree magnetic bearing from the “FL R 4 sec” jetty light. (See the attached King Harbor chartlet).



## 20. TIME LIMIT

Boats failing to finish by 1600 hours, Saturday July 27, 2019 will be considered Did Not Finish (DNF). This changes rule 35. It is essential that each boat notify the Race Committee at her earliest opportunity if she retires from the race or is still at sea at 1600 hours Saturday. Failure to do this may result in the rejection of future entries in this event.

Notification may be made by any of the following methods:

- Hail the Race Committee on station at the finish line.
- Contact KHYC by VHF Ch. 78 or cell phone (310) 259-1040 (finish boat).

## 21. PENALTY SYSTEM

Boats protested and found by the Protest Committee following a hearing to have broken a rule for equipment or safety violation under US Safety Equipment Regulations (USSER) or US Coast Guard (USCG) requirements, shall be penalized. The Protest Committee will apply a minimum of ten (10) minutes added to the boat's recorded elapsed time, up to a maximum of disqualification (DSQ) for each found violation. This changes rule 64.1.

## 22. PROTESTS AND REQUESTS FOR REDRESS

- 22.1 Protest and requests for redress must be filed at the KHYC message center desk within two hours after finishing. Protest hearings will begin on Saturday at 1000 hours in approximately the order received. Changes in this procedure will be posted on the KHYC bulletin board.
- 22.2 Yachts intending to file a protest or request redress shall notify the finishing boat upon finishing either on VHF channel 78 or hailing. Failure to do so may result in the denial of a protest or redress hearing.
- 22.3 Protest forms are available downstairs at the KHYC Regatta bulletin board.

## 23. TROPHIES

Trophies will be awarded to the top finisher(s) in each class based on participation. The trophy presentation will take place at the King Harbor Yacht Club at 1600 on Saturday, July 27th, 2019.

---

## **24. ADDITIONAL INSTRUCTIONS FOR CRUISING CLASS**

Paragraphs 25 through 31 apply only to Cruising Class boats.

## **25. CRUISING CLASS RATING**

A Cruising Class Boat's Race Rating for this race shall be their base OWC rating less any non-spinnaker offset adjustments that may apply.

## **26. CRUISING CLASS ENGINE USE**

- 26.1 An engine may be used for charging batteries, pumping bilges or supplying power for weighing anchor or refrigeration while in neutral. In addition, Cruising Class participants may use an engine for propulsion within the limitations stated below.
- 26.2 A vessel's speed in knots may not exceed its hull speed while the engine is in-gear propelling the boat. Hull speed is defined as  $1.34 \times \text{Square Root (LWL)}$ , where 'LWL' is the length of the waterline in feet.
- 26.3 A vessel's engine may not be put in-gear within thirty (30) minutes after that vessel's start time.

## **27. RECORDING REQUIREMENTS**

- 27.1 The skipper shall record on the Cruising Class Engine Log (as shown on Attachment B) both the GPS Latitude and Longitude position of the boat (to the second decimal place of a minute) and the GPS time (to nearest second) on each occasion when the engine was put in-gear and was taken out of gear.
- 27.2 A minimum of 30 minutes shall be recorded each time the engine is put in-gear.
- 27.3 Record the total engine in-gear propulsion time in MINUTES.

## **28. FILING THE 2018 SANTA BARBARA TO KING HARBOR CRUISING CLASS ENGINE LOG**

- 28.1 All Cruising Class participants that finish shall file a Cruising Class Engine Log, as shown in Attachment B of these Sailing Instructions, even if the engine is not used. The Cruising Class Engine Log will be included in the Skipper's Packet. The Cruising Class Engine Log must be submitted to the KHYC Race Office within four (4) hours of the boat's finish time, or by 1600 hours on Saturday, July 27, 2019, whichever is earlier.
- 28.2 A Cruising Class boat failing to correctly complete and file her Cruising Class Engine Log, may be protested by the Race Committee and may be penalized up to a Disqualification (DSQ) by the Protest Committee following a hearing.
- 28.3 ENGINE USE IMPACT ON FINAL CORRECTED TIME - An adjustment equal to  $(\text{IN-GEAR-TIME} \times 0.40 \times \text{Square Root (LWL)})$  will be added to the Corrected Time to produce a Final Corrected Time.

## **29. CRUISING CLASS PERMITTED EQUIPMENT**

- 29.1 Whisker Poles may be used and are limited in length to 1.4 time the 'J' measurement.
- 29.2 Double headsails, double head rigs, and multi-mast vessels are allowed.
- 29.3 Power winches are allowed. This changes rule 52.

## **30. OTHER CRUISING CLASS REQUIREMENTS AND INFORMATION**

- 30.1 Competitors in the Cruising Classes are reminded that under the International Regulations for Preventing Collisions at Sea (IRPCAS) that they are required to exhibit a white masthead light aloft when under power.
- 30.2 Rig bands for the 'P' and 'E' measurement are not required. However, the mainsail must measure to the reported dimensions.



- 
- 30.3 Sail dimensions are not required to be marked on the sails.
- 30.4 Cruising Class boats finishing under power (motoring) shall have the mainsail raised. A boat failing to have the mainsail raised may be protested by the Race Committee and may be penalized by having sixty (60) minutes added to her elapsed time by the Protest Committee following a hearing.

### **31. CRUISING CLASS PHRF NON-SPINNAKER OFFSET**

The PHRF Non-Spinnaker Offset shall be added only to boats racing Non-Spinnaker in the Cruising Class. The Race Rating for a boat racing Non-Spinnaker in the Cruising Class shall be the PHRF Base OWC Rating + PHRF Non-Spinnaker Offset.

### **32. INSURANCE**

Each participating boat shall be insured with valid combined single limit watercraft liability insurance in and amount not less than \$300,000.

### **33. DISCLAIMER OF LIABILITY**

Competitors participate in this race entirely at their own risk. See RRS 4 Decision to Race. The Organizing Authority will not accept liability for damage or personal injury or death sustained in conjunction with, prior to, during, or after this Race.

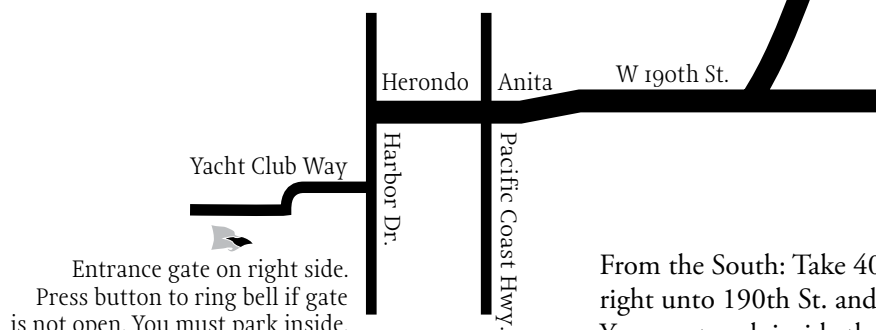
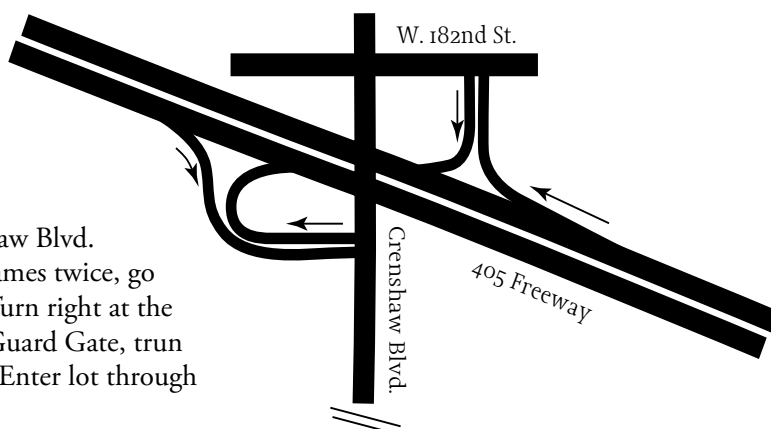
---

### **Special thanks to the following supporters of the 2019 Santa Barbara-to-King Harbor Race:**

- Santa Barbara Harbormaster & Crew •
  - King Harbor Yacht Club Race Crew • Santa Barbara Yacht Club Race Crew •
  - Scott Gordon, Haagen/Typecraft Printing •
-

## King Harbor Yacht Club

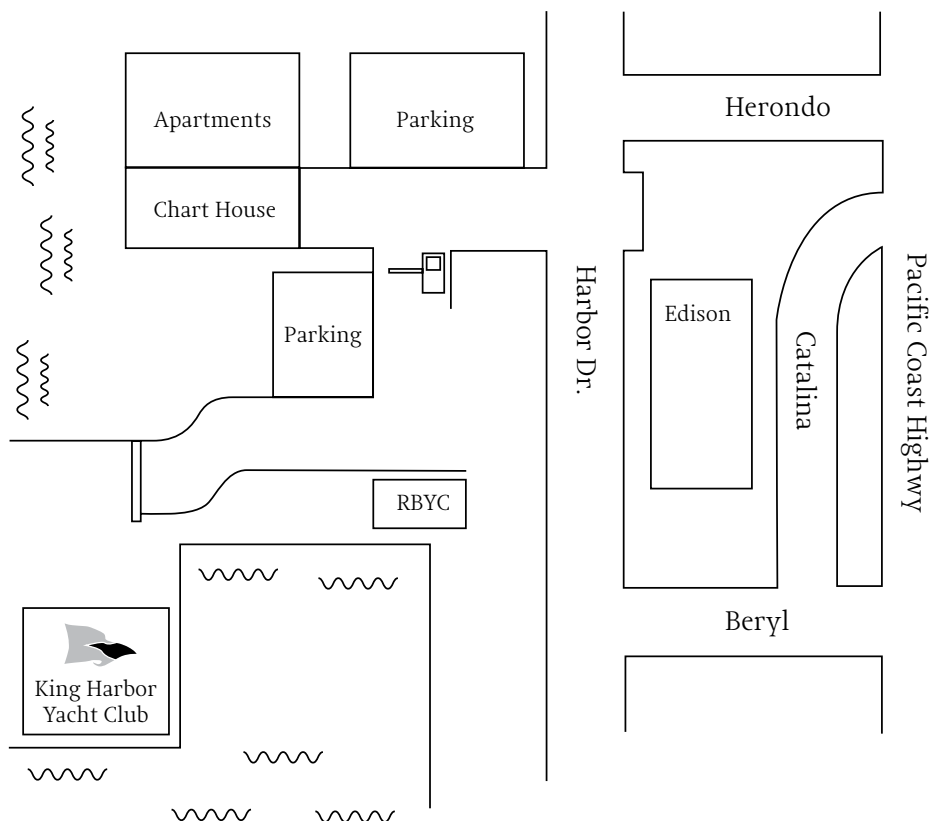
From the North: Take 405 South, exit Crenshaw Blvd. Make a right onto 190th St. (street changes names twice, go straight.) Dead-end at Harbor Dr., turn left. Turn right at the first street, Yacht Club Way. Go through left Guard Gate, turn right and follow the winding road to the end. Enter lot through gate on left. Club is on your left.



Entrance gate on right side.  
Press button to ring bell if gate is not open. You must park inside.

From the South: Take 405 North, exit Crenshaw Blvd. Make a right unto 190th St. and follow from the North directions. You must park inside the KHYC lot. Distance is approximately five miles from the freeway.

Please park inside the KHYC parking lot to avoid being ticketed.  
Carpooling is greatly appreciated.



exceptional craftsmanship



unparalleled convenience

[harbormarineworks.com](http://harbormarineworks.com)

## Attachment B – Cruising Class Motoring Log

### Santa Barbara to King Harbor Race 2019

BOAT NAME \_\_\_\_\_

SAIL NUMBER \_\_\_\_\_

LENGTH OF WATER LINE (LWL) \_\_\_\_\_

FINISH TIME \_\_\_\_\_ AM ☐ PM ☐ ON \_\_\_\_\_

IN GEAR OR OUT OF GEAR	DATE	TIME	LATITUDE	LONGITUDE	ENGINE IN GEAR MINUTES
START	7/26/19				
FINISH					
				TOTAL MINUTES IN GEAR	

---

Skipper/Charterer		Crew Member One		Crew Member Two

---

**FILING** – This Cruising Class Engine Log must be submitted to the KHYC Message Center Desk within four (4) hours of the boat’s finish time, or by 1600 hours on Saturday, July 27, 2019, whichever is earlier. The skipper and two crew members shall certify that the Engine in Gear Time and LAT/LON locations reported are true and accurate.

**LIMITATIONS** – Total engine propulsion time is not limited for Cruising Class boats. A vessel’s speed in knots may not exceed its hull speed while the engine is in-gear propelling the boat. Hull speed is defined as  $1.34 \times \text{Square Root (LWL)}$ , where ‘LWL’ is the length of the waterline in feet.

2019  
SB to KH  
Race



PHOTO BY JOY SAILING

# SPEED DOWNWIND



**Pass your competition.** The Ullman Sails Red Line Spinnaker Series offers custom downwind racing sails that maximize your boat speed across the entire wind range. Contact your local loft to optimize your downwind inventory before your next race.

## ULLMAN SAILS NEWPORT BEACH

Bruce Cooper | 714.432.1860 | [ullman@ullmansails.com](mailto:ullman@ullmansails.com)

## ULLMAN SAILS VENTURA

Gary Swenson | 805.644.9579 | [ullmanventura1@att.net](mailto:ullmanventura1@att.net)

## ULLMAN SAILS SAN FRANCISCO & MONTEREY BAY

David Hodges | 831.454.0868 | [dhodges@ullmansails.com](mailto:dhodges@ullmansails.com)



***Congratulations to  
All Racers!***



**Vaughn Allen Yacht Sales**

*Local knowledge, unsurpassed experience, and  
digital marketing expertise from Santa Barbara to San Diego*



Santa Barbara	805.962.8195
Channel Islands	805.200.3161
Wilmington	310.995.9989
Long Beach	562.431.8699
Newport Beach	949.673.3354
San Diego	619.209.7360

[sales@seacoastyachts.com](mailto:sales@seacoastyachts.com)

[www.seacoastyachts.com](http://www.seacoastyachts.com)