



Santa Barbara Yacht Club
Staff Commodore's Regatta
July 8th, 2016

SAILING INSTRUCTIONS

The Organizing Authority for the 2016 Staff Commodore's Regatta will be:
The Santa Barbara Yacht Club (SBYC), 130 Harbor Way, Santa Barbara, CA 93109

1. RULES

- 1.1 The regatta will be governed by the rules as defined in *the Racing Rules of Sailing* (RRS).
- 1.2 US Sailing prescriptions to rules 60, 63.2 and 63.4 will not apply.
- 1.3 Appendix T, Alternate Procedures for Dispute Resolution; Sections A, B, and D will apply.
- 1.4 Failure to comply with orders from the United States Coast Guard, Santa Barbara Harbor Patrol or any other recognized authority is grounds for disqualification without hearing at the discretion of the Race Committee. This Changes Rule 63.1.

2. NOTICES TO COMPETITORS

Notices to competitors and amendments to these Sailing Instructions will be posted on the official notice board located on the lower deck of SBYC.

3. CHANGES IN SAILING INSTRUCTIONS

Any change in the sailing instructions will be posted before 1120 hours on the day it will take effect, except that any change to the schedule of races will be posted by 2000 on the day before it will take effect.

4. SIGNALS MADE ASHORE

- 4.1 Signals made ashore will be displayed from the SBYC yardarm.
- 4.2 When flag AP is displayed ashore, '1 minute' is replaced with 'not less than forty (40) minutes' in race signal AP.

5. SCHEDULE

5.1 *Friday, July 8th*

1600	Registration closes
1600	Mandatory Competitor meeting on the upper deck of SBYC
1700	First warning
1915	No Warning Signal after this time
After Racing	Awards and hors d'oeuvres

- 5.2 The number of races to be sailed will depend on the number of competitors and will be announced at the competitor meeting once registration is finalized.

6. CLASS FLAG

The class flag will be a Red flag with a white 'A'.

7. RACING AREA

The racing area will be the Santa Barbara channel within one mile of SBYC and will be defined more clearly at the competitor meeting.

8. BOATS PROVIDED BY THE ORGANIZING AUTHORITY

- 8.1 Harbor 20 boats will be provided for competing teams. Standing rigging including upper battens shall not be adjusted, unless directed by the RC. Only telltales may be added to boats. Running rigging and fittings shall be used for their intended purposes only. All supplied equipment shall be carried aboard while racing.
- 8.2 While reasonable steps are taken to equalize the boats, variations, including deviations from class rules, will not be grounds for redress. This changes RRS 62.
- 8.3 Boats will be assigned at the competitor meeting and done by random drawing via the Race Committee. Teams will be assigned a boat that they will sail for the duration of the event.
- 8.4 Hiking is not permitted. Skipper and crew shall keep their bodies within the confines of the cockpit and shall not place their feet on the seats or seat cushions at any time while racing, except to affect immediate repair, adjust the jib Cunningham, or for safety reasons.
- 8.5 Spinnakers shall not be used for the regatta.
- 8.6 No skipper shall sail his or her own yacht unless the race committee elects to sail the event as a round robin.

9. BREAKDOWNS / DAMAGE

- 9.1 A damage deposit of \$500 per incident may be collected upon damage done to a boat after said incident. This deposit is the maximum payable by the team as a result of any one incident.
- 9.2 Competitors are responsible for inspecting their assigned boats before each race for possible breakdowns and missing equipment. Discrepancies must be reported to the RC immediately.
- 9.3 Competitors shall report any damage, breakdown, or loss of equipment, however slight, to the RC at the first reasonable opportunity.
- 9.4 If there is an equipment breakdown that was unforeseeable by the crew and prevents a boat from completing a race, the Race Committee may decide to re-sail the race or award redress.

10. CREW

- 10.1 Each qualified skipper is responsible for providing one crewmember.
- 10.2 A Harbor 20 boat owner or owner's representative will accompany each boat.

11. COURSES

- 11.1 Courses will be modified windward-leeward configuration with the start/finish line in the middle of the course as pictured in 'Attachment A – Course Chart'.
- 11.2 The course number will be displayed on the race committee signal boat and may be announced on VHF channel 71.

12. MARKS

Turning marks will be yellow inflatable tetrahedrons.

13. START

- 13.1 The Start line will be between an orange tetrahedron at the pin end and an orange flag flown from the Race Committee Signal Boat. A yellow inflatable mark may be attached to the stern of the Race Committee Signal Boat and shall be considered part of the Starting Mark for the purposes of rule 28 and rule 31.
- 13.2 Races will be started by using RRS 26 with the warning signal given 5 minutes before the starting signal.
- 13.3 If when rule 30.1 or 30.2 is in effect, any part of a boat's hull, crew, or equipment is on the course side of the starting line during the one minute before her starting signal and she is identified, the race committee will attempt to broadcast her sail number on the designated VHF

channel. Failure to make a broadcast or of a boat to see or hear her recall notification shall not relieve her of her obligation to start correctly and shall not be grounds for redress. A boat's position in the sequence of hailed numbers or broadcast numbers shall not be grounds for redress. This changes rule 62.1(a).

- 13.4 As a courtesy, the race committee may attempt to hail on course side boats on the designated VHF channel. Failure of a boat to see or hear her recall notification shall not be grounds for redress. A boat's position in the sequence of hailed numbers or broadcast numbers shall not be grounds for redress.

14. CHANGE OF COURSE

Marks may be moved without signal to maintain course configuration provided that no boat has begun the preceding leg.

15. THE FINISH

The finish line will be between an orange tetrahedron at the pin end and an orange flag flown from the committee boat.

16. PENALTY SYSTEM

- 16.1 Appendix T, Rule T1 will apply: The first two sentences of rule 44.1 are changed to: 'A boat may take a One-Turn Penalty when she may have broken a rule of Part 2 or rule 31 while *racing*. However, when she may have broken a rule of Part 2 while in the *zone* around a *mark* other than a starting *mark*, her penalty shall be a Two-Turns Penalty.'

- 16.2 Appendix T, Section B – Post Race Penalties will apply:

T2.1 After a race, a boat that may have broken a rule of Part 2 or rule 31 while *racing* may take a Post-Race Penalty for that incident. The penalty shall be a Scoring Penalty, calculated as stated in rule 44.3(c). However, rules 44.1(a) and (b) apply. A boat takes a Post-Race Penalty by informing the race committee in writing and identifying the race number and when and where the incident occurred.

T2.2 The Post-Race Penalty shall be

- (a) 30%, if taken before the protest time limit, or
- (b) 40%, if taken after the protest time limit but before the beginning of a hearing involving the incident. **This changes the Notice of Race.**

17. PROTESTS AND REQUESTS FOR REDRESS

Protests and requests for redress must be delivered to the front desk of SBYC within one hour of the Race Committee's return to the dock. Protest forms are available at the front desk of SBYC. Protest times and locations will be listed on the official notice board.

18. SCORING

The low-point scoring system of Appendix A will apply except that when less than six races have been completed, a boat's series score will be the total of all her race scores. One race must be completed to constitute a series.

19. RADIO COMMUNICATION

The race committee will monitor and make transmissions over VHF channel 71.

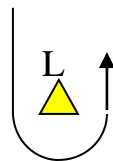
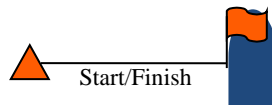
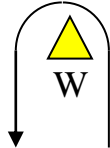
20. PRIZES

Trophies will be awarded to the top finishers in the regatta. The top finisher will win the William W. Deardorff Memorial Perpetual Trophy.

21. DISCLAIMER OF LIABILITY

Participants in this event compete entirely at their own risk. See Rule 4, Decision to Race. The organizing authority will not accept any liability for material damage or personal injury or death sustained in conjunction with or prior to, during, or after the regatta.

Attachment A – Course Chart



Course 1: Start – W – L – finish

Course 2: Start – W – L – W – Finish

Course 3: Start – W – L – W – L – Finish

Course 4: Start – W – L – W – L – W - Finish