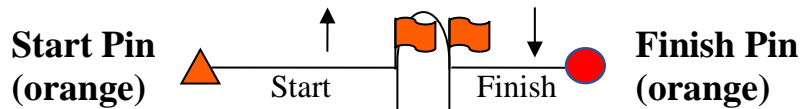
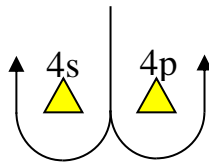
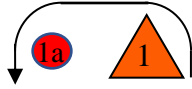


## Attachment C - Course Chart



**Course 1 = Start – 1 – 1a – 4s/4p – 1 – 1a – Finish**

**Notes:**

- The windward mark (1) will be an orange inflatable shape.
- The gate marks (4s/4p) will be yellow inflatable shapes.
- The windward offset mark (1a) will be an orange ball.
- The starting pin will be an orange tetrahedron.
- The finishing pin will be an orange ball.