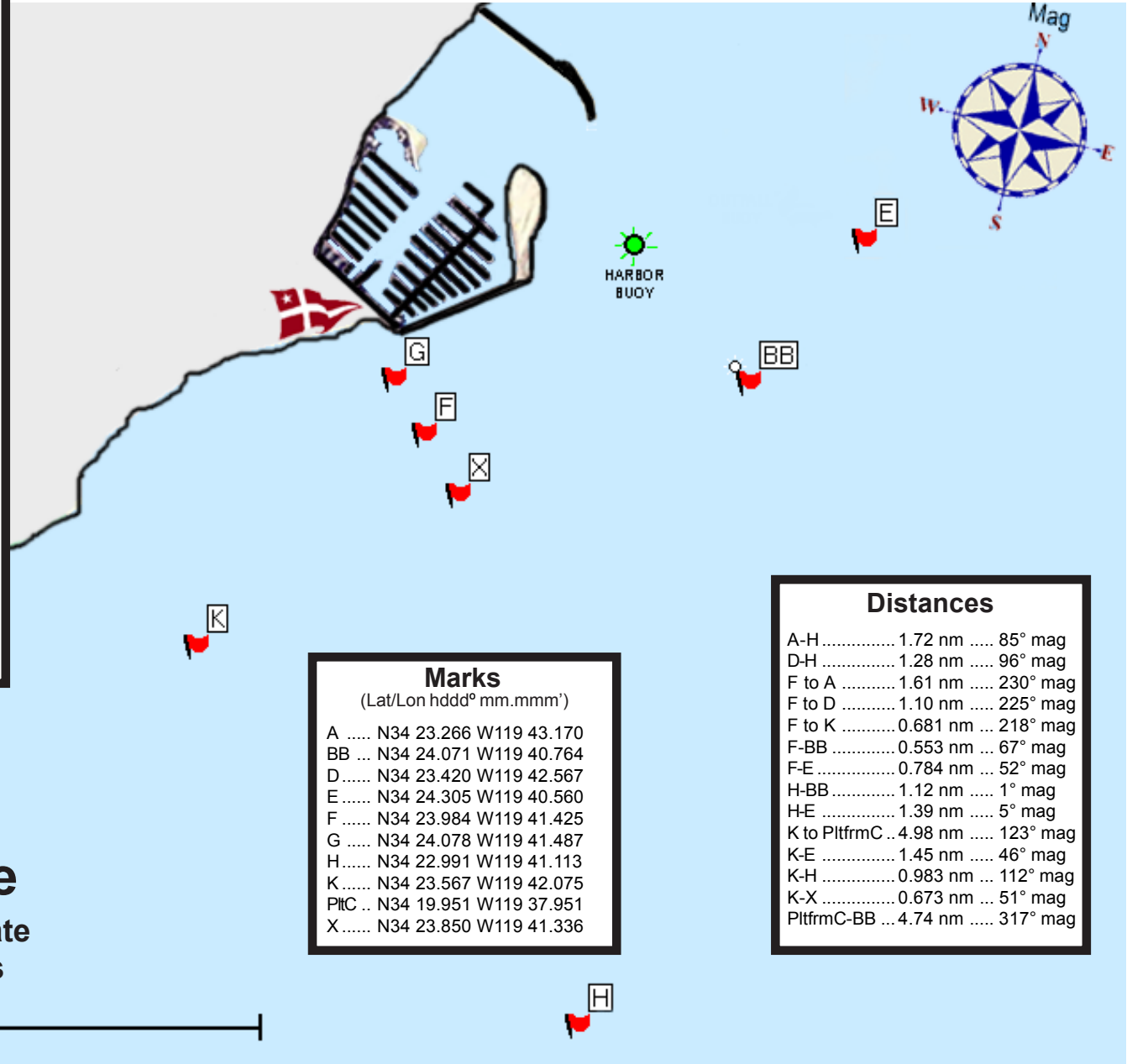


Santa Barbara Yacht Club

Course Chart

Courses

A 2.....St-Ap-Gt-BBp-Fin	4.31 nm
A 4.....St-Ap-Hp-BBp-Fin	5.01 nm
A 5.....St-Ap-Gt-Ep-Fin	4.79 nm
A 7.....St-Ap-Hp-Ep-Fin	5.51 nm
A 8.....St-Ap-Gt-Ep-Xp-Kp-Fin	6.14 nm
A 9.....St-Ap-Xs-Ap-Fin	6.47 nm
A 11.....St-Ap-Gt-Ep-Xp-Dp-Fin	7.00 nm
A 12.....St-Ap-Gt-Ep-Xp-Ap-Fin	8.01 nm
BB1.....St-BBs-Fin	1.11 nm
BB2.....St-BBs-Xp-BBs-Fin	2.15 nm
D 1.....St-Dp-Fin	2.20 nm
D 2.....St-Dp-Gt-BBp-Fin	3.28 nm
D 3.....St-Dp-Xs-Kp-Fin	3.56 nm
D 4.....St-Dp-Hp-BBp-Fin	4.05 nm
D 5.....St-Dp-Gt-Ep-Fin	3.77 nm
D 6.....St-Dp-Gt-BBp-Xp-Kp-Fin	4.60 nm
D 7.....St-Dp-Hp-Ep-Fin	4.55 nm
D 8.....St-Dp-Gt-Ep-Xp-Kp-Fin	5.12 nm
D 9.....St-Dp-Xs-Dp-Fin	4.41 nm
D 10.....St-Dp-Hp-Ep-Xp-Kp-Fin	5.91 nm
E 1.....St-Es-Fin	1.57 nm
E 2.....St-Es-Xp-Es-Fin	3.14 nm
E 3.....St-Es-Xp-BBs-Fin	2.65 nm
K 1.....St-Kp-Fin	1.36 nm
K 2.....St-Kp-Gt-BBp-Fin	2.43 nm
K 3.....St-Kp-Xs-Kp-Fin	2.71 nm
K 4.....St-Kp-Hp-BBp-Fin	3.34 nm
K 5.....St-Kp-Gt-Ep-Fin	2.92 nm
K 6.....St-Kp-Gt-BBp-Xp-Kp-fin	3.75 nm
K 7.....St-Kp-Hp-Ep-Fin	3.84 nm
K 8.....St-Kp-Gt-Ep-Xp-Kp-Fin	4.27 nm
K 13.....St-Kp-PltfrmCp-BBp-Fin	10.9 nm



Distances

A-H	1.72 nm	85° mag
D-H	1.28 nm	96° mag
F to A	1.61 nm	230° mag
F to D	1.10 nm	225° mag
F to K	0.681 nm	218° mag
F-BB	0.553 nm	67° mag
F-E	0.784 nm	52° mag
H-BB	1.12 nm	1° mag
H-E	1.39 nm	5° mag
K to PltfrmC ..	4.98 nm	123° mag
K-E	1.45 nm	46° mag
K-H	0.983 nm	112° mag
K-X	0.673 nm	51° mag
PltfrmC-BB ..	4.74 nm	317° mag

Marks

(Lat/Lon hddd° mm.mmm')

A	N34 23.266 W119 43.170
BB ..	N34 24.071 W119 40.764
D	N34 23.420 W119 42.567
E	N34 24.305 W119 40.560
F	N34 23.984 W119 41.425
G	N34 24.078 W119 41.487
H	N34 22.991 W119 41.113
K	N34 23.567 W119 42.075
PltC ..	N34 19.951 W119 37.951
X	N34 23.850 W119 41.336

Note
Gt = Gate
Fp-Xs

